



**San Diego Unified School District**

**Taking Successful Strategies to Scale  
and Closing the Opportunity Gap with Robust  
Public Education Funding Town Hall Meeting**

Patti Herrera, Director, Legislative Services

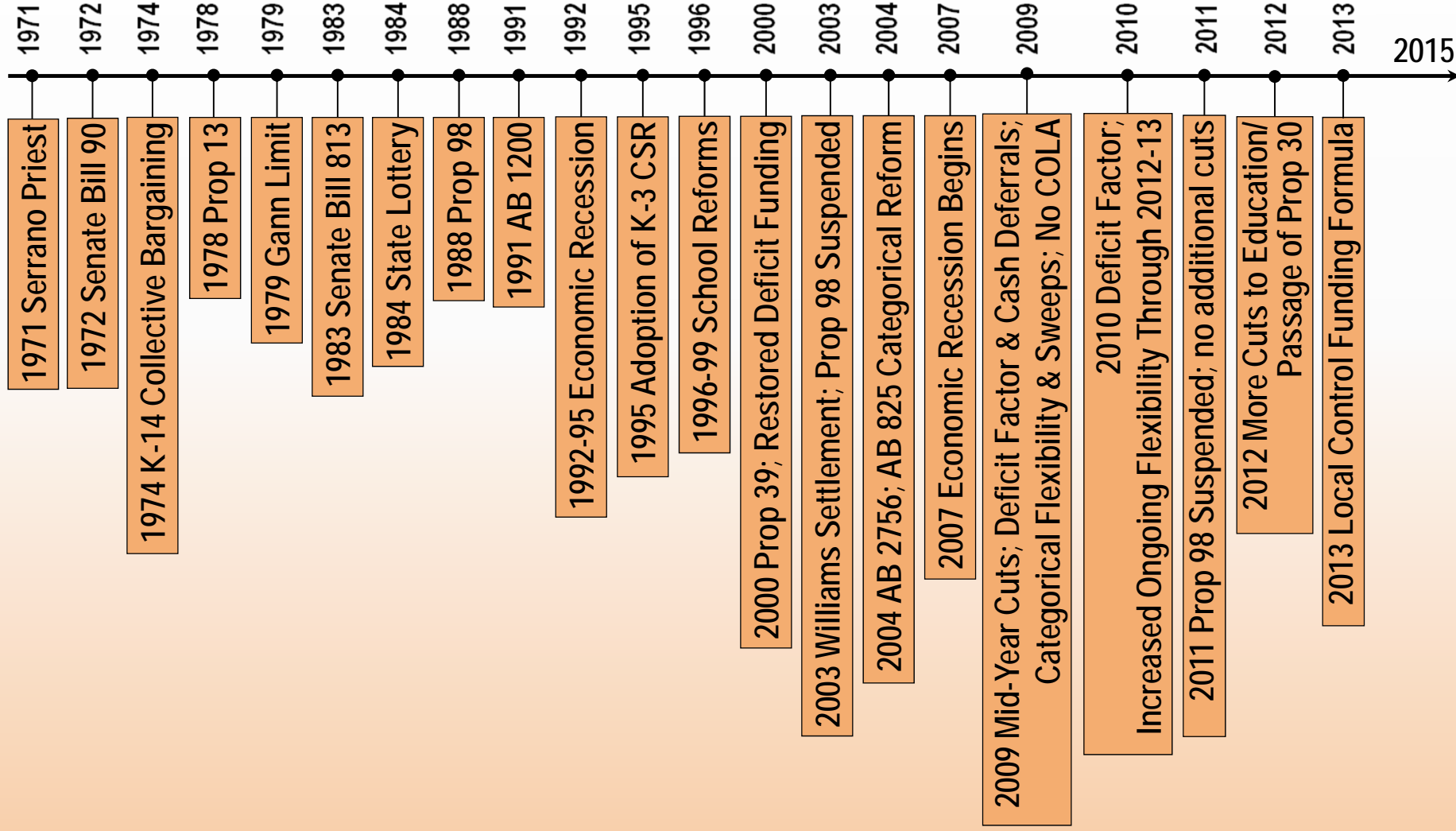
and

John Gray, President



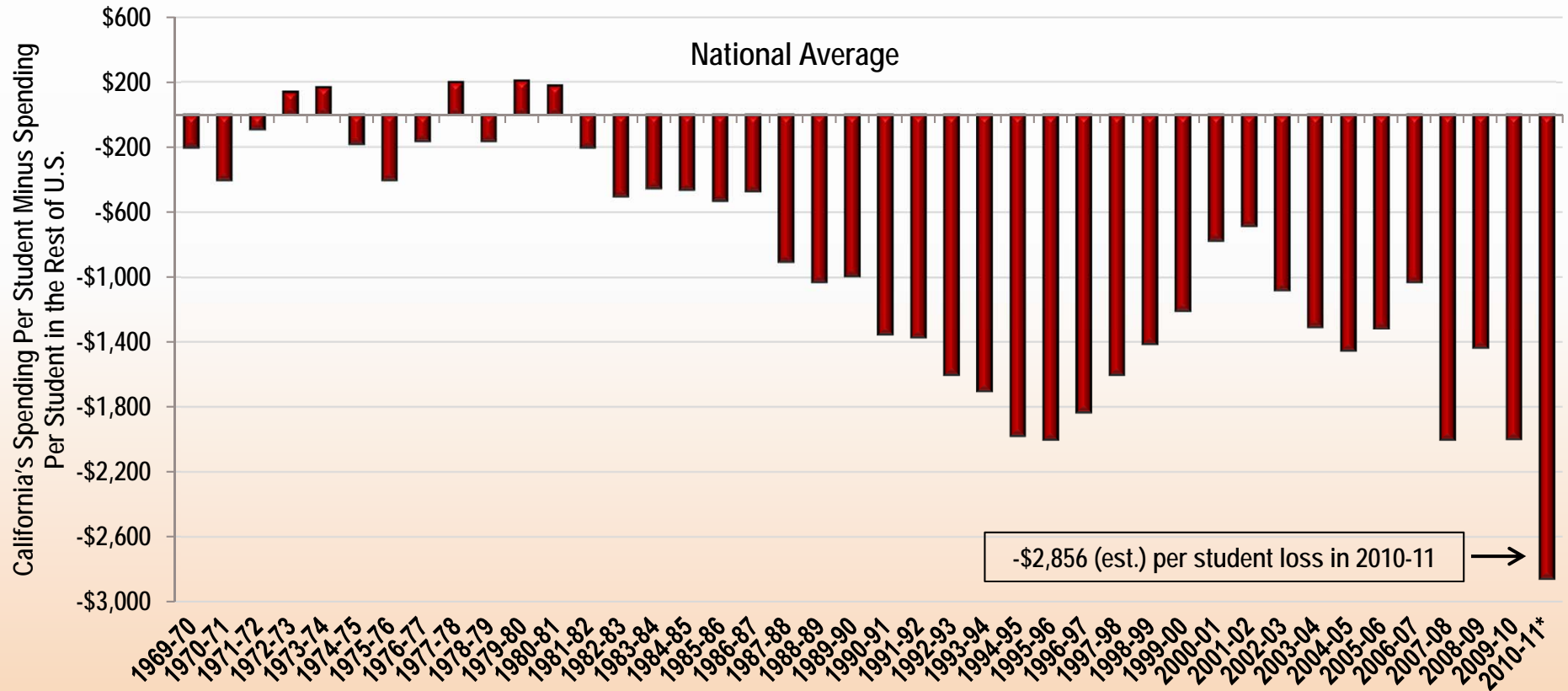
**School  
Services  
of California**  
INC. <sup>TM</sup>

# California School Finance Timeline



# California's Education Spending Continues to Lag

California's K-12 Spending Per Student Lags Behind That of the Rest of the U.S. More Than at Any Time in 40 Years



\* 2010-11 data estimated

Note: Rest of U.S. excludes the District of Columbia

Source: National Education Association

## California's Spending Lags the Nation

### California's Schools Lag Behind Other States on a Number of Measures

	California Rank	California	Rest of U.S.
K-12 Spending Per Student (2009-10)*	44	\$8,826	\$11,372
K-12 Spending as a Percentage of Personal Income (2008-09)*	46	3.28%	4.25%
Number of K-12 Students Per Teacher (2009-10)*	50	21.3	13.8
Number of K-12 Students Per Administrator (2007-08)	46	358	216
Number of K-12 Students Per Guidance Counselor (2007-08)	49	809	440
Number of K-12 Students Per Librarian (2007-08)	50	5,038	809

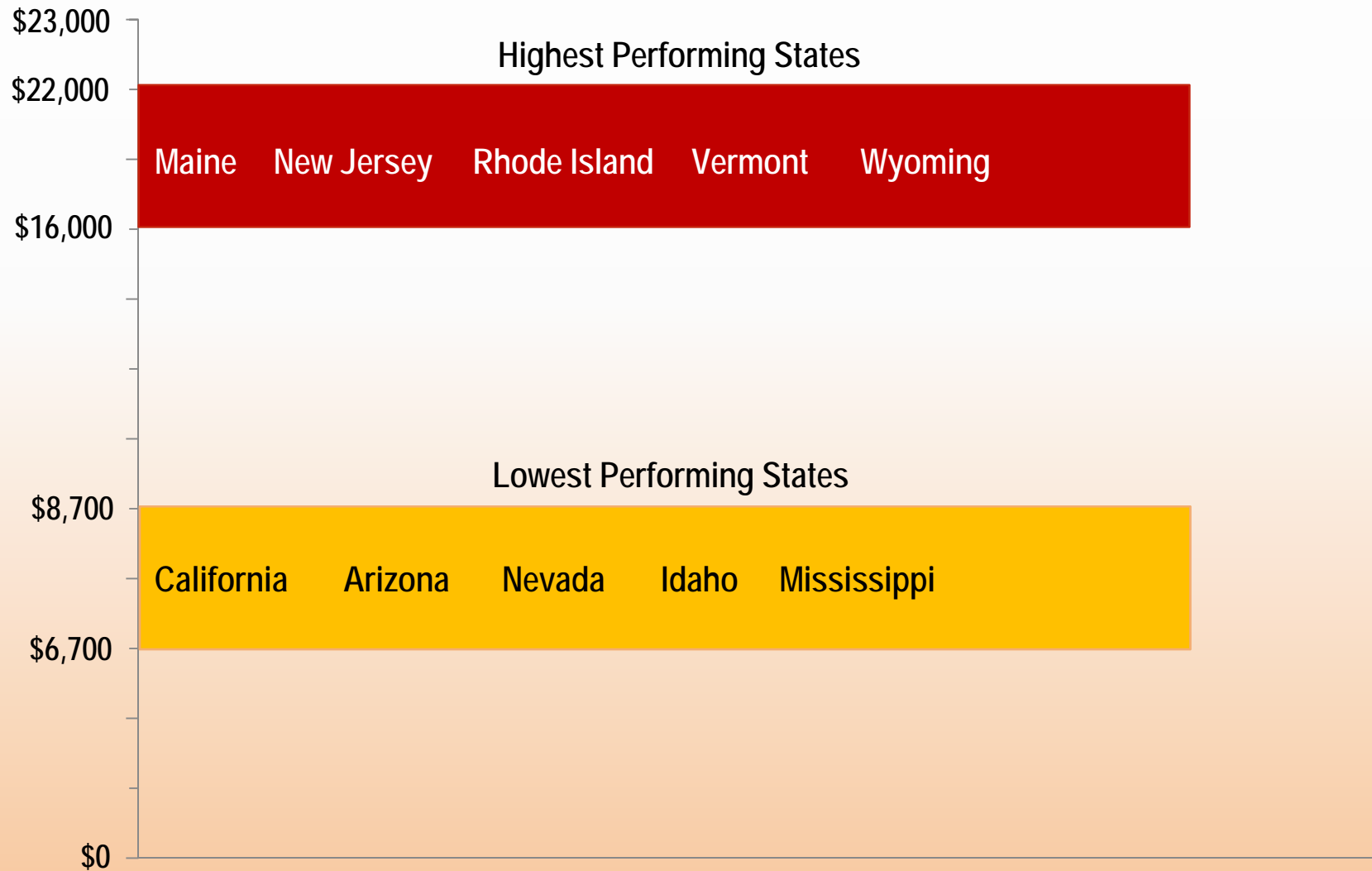
\*2008-09 and 2009-10 data are estimated.

Note: "California Rank" and "Rest of U.S." exclude the District of Columbia. Spending per student and number of students per teacher are based on average daily attendance (ADA). Number of students per administrator, guidance counselor, and librarian are based on statewide enrollment.

Source: National Education Association, National Center for Education Statistics, and U.S. Bureau of Economic Analysis

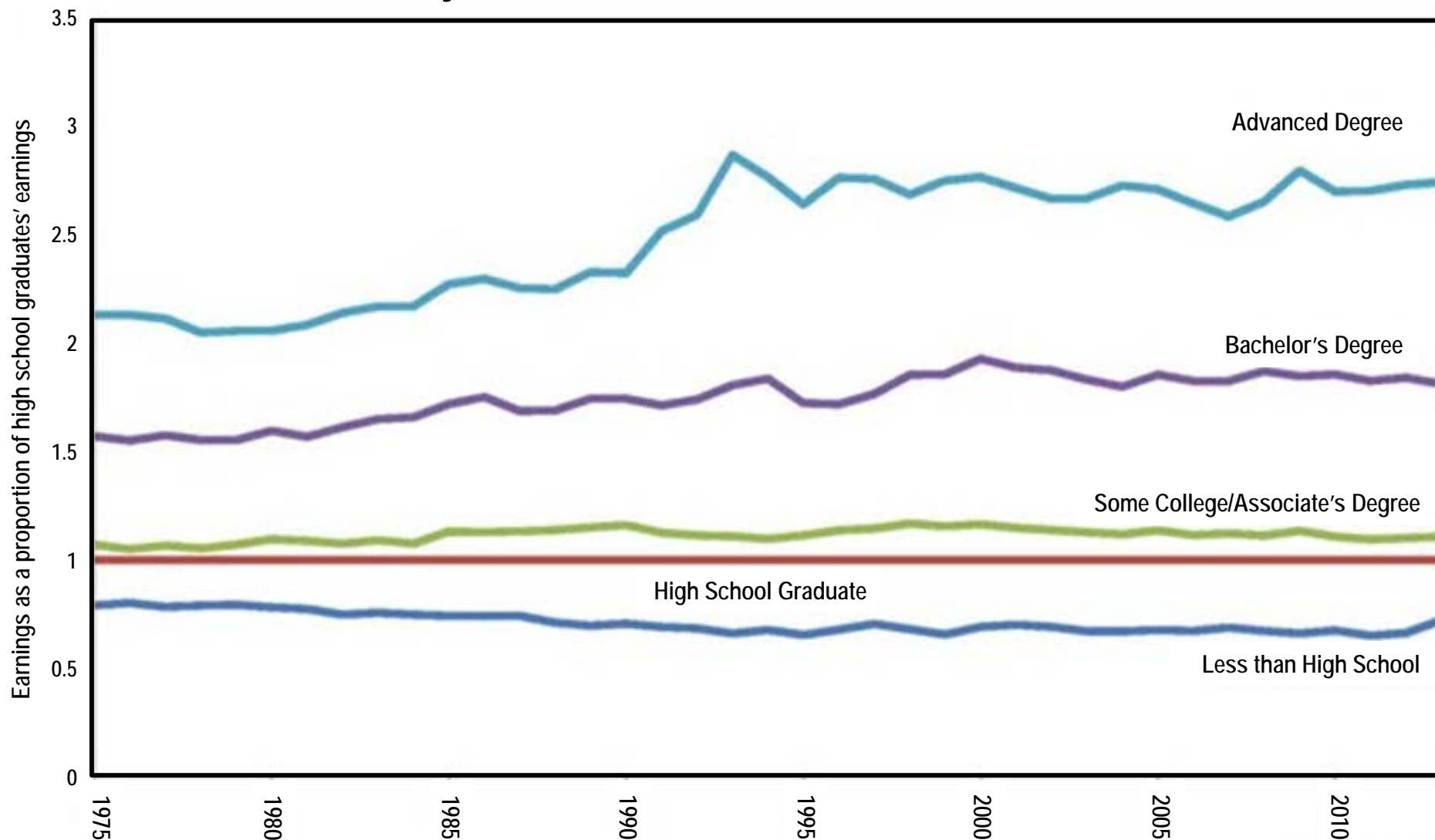
# Money Matters in Student Performance

## Test Scores vs. Dollars Per Student



5

## Average Earnings of Full-Time, Year-Round Workers as a Proportion of the Average Earnings of High School Graduates by Educational Attainment: 1975 - 2013



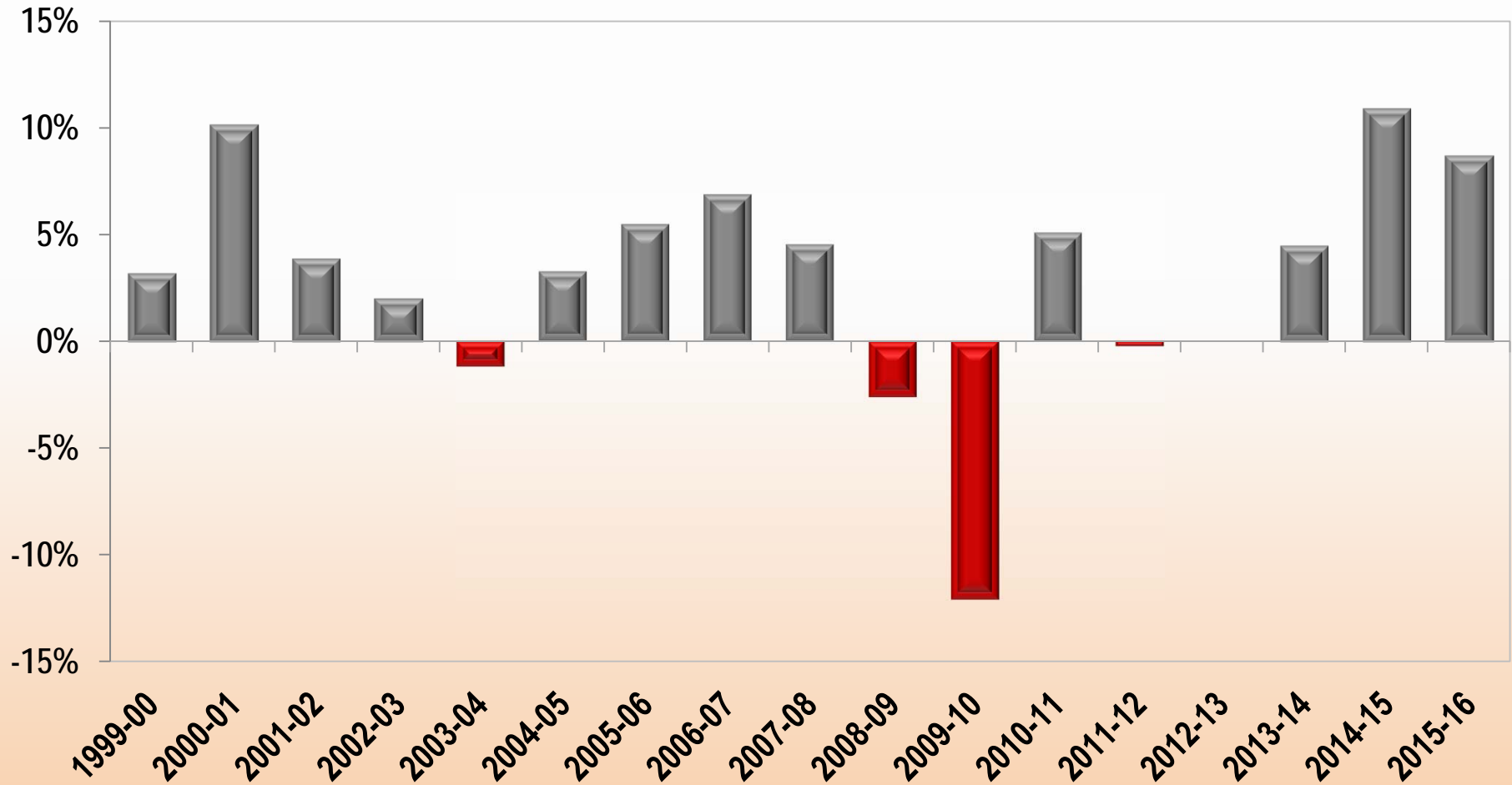
Source: U.S. Census Bureau: 1975-2002 March Current Population Survey, 2003-2014 Annual Social and Economic Supplement to the Current Population Survey

## The Cost of Education

Ranking	State	Current Expense Per Student (Adjusted for Regional Cost Differences)	Percentage of National Average
1	Vermont	\$18,882	161%
2	Alaska	\$18,113	154%
3	Wyoming	\$17,758	151%
4	New York	\$17,326	148%
5	New Jersey	\$15,421	131%
6	Connecticut	\$15,172	129%
7	Maine	\$14,613	125%
8	New Hampshire	\$14,561	124%
9	District of Columbia	\$13,917	119%
10	Delaware	\$13,902	118%
-	US Average	\$11,735	100%
46	California	\$8,308	71%

# Per-ADA Funding Volatility

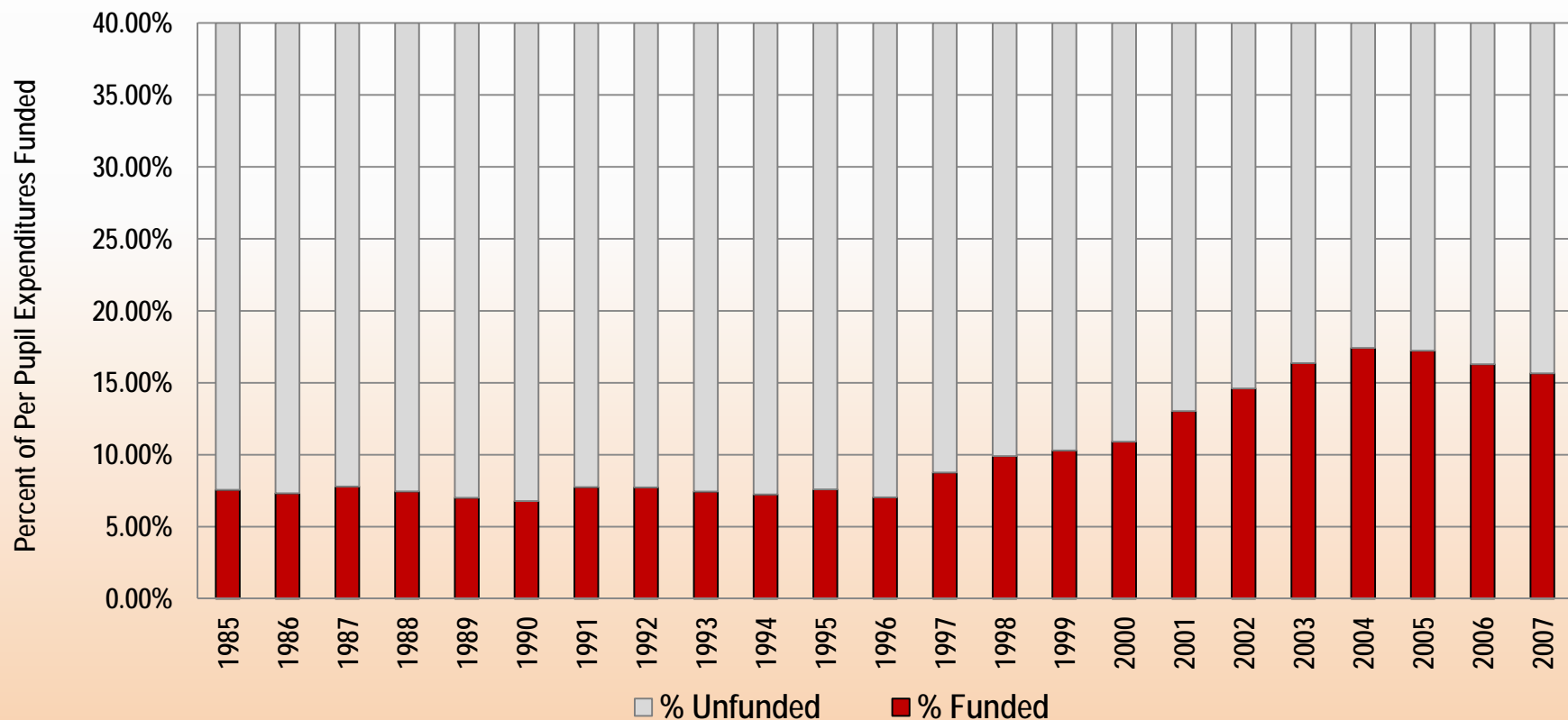
## Per-Average Daily Attendance Revenue Change





## Historic IDEA\* Funding

- The San Diego Unified School District's Unrestricted General Fund in 2013-14 contributed approximately \$1,583 per all District students to Special Education



Source: Digest of Education Statistics 2010, National Center for Education Statistics

\*Individuals with Disabilities Education Act

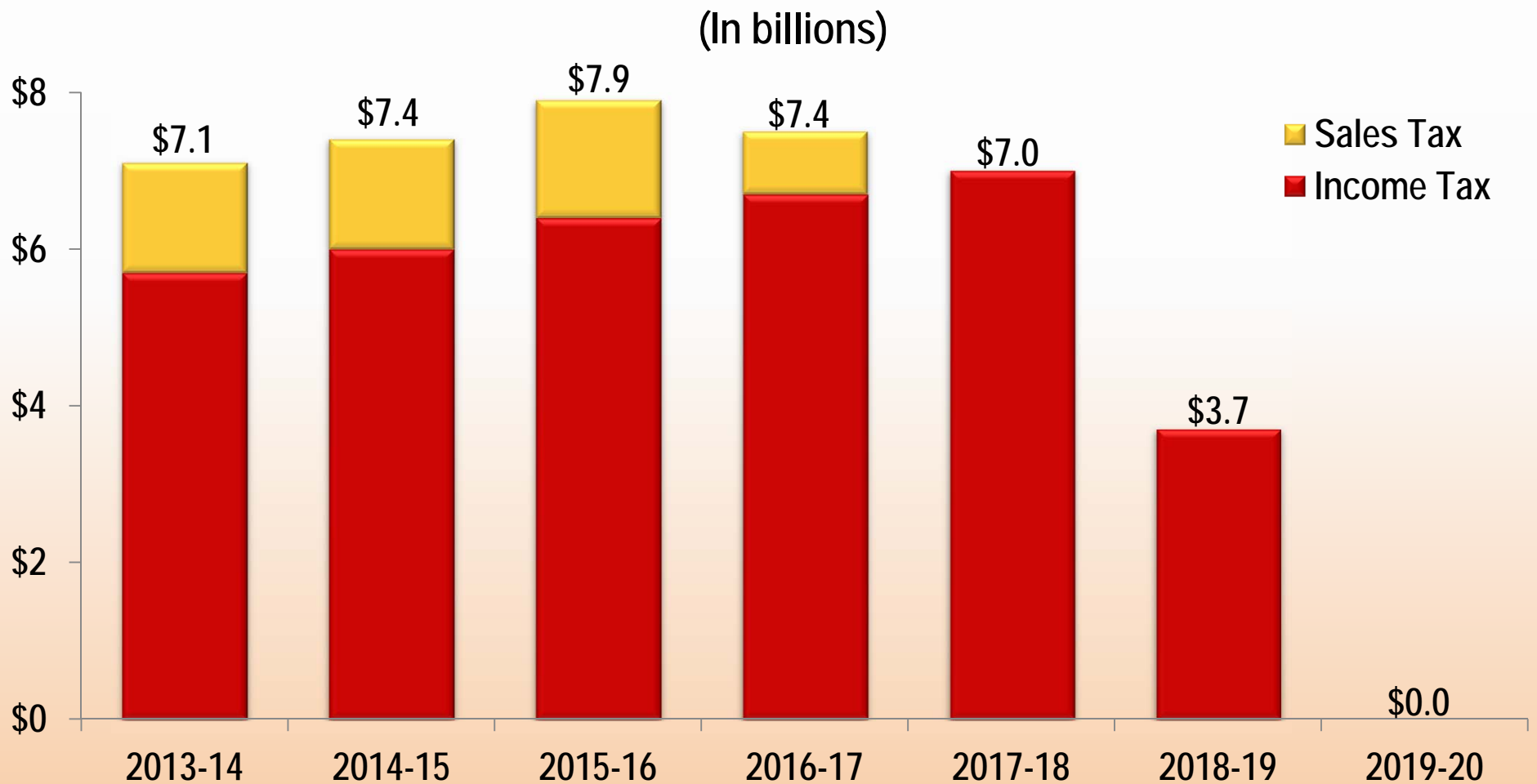
## Proposition 30 – The Schools and Local Public Safety Protection Act of 2012

- Proposition 30 continues to generate approximately \$7 billion for education annually
  - Sales tax increase of 0.25% will expire in 2016
  - Personal income tax increase will expire in 2018
- Two initiatives have already been filed with the Attorney General's Office (15-0065 and 15-0070)



Go to [www.sscal.com/myssc.cfm](http://www.sscal.com/myssc.cfm) for Initiative 15-0065 "The School Funding and Budget Stability Act of 2016" and Initiative 15-0070 "Investment in California's Children Act"

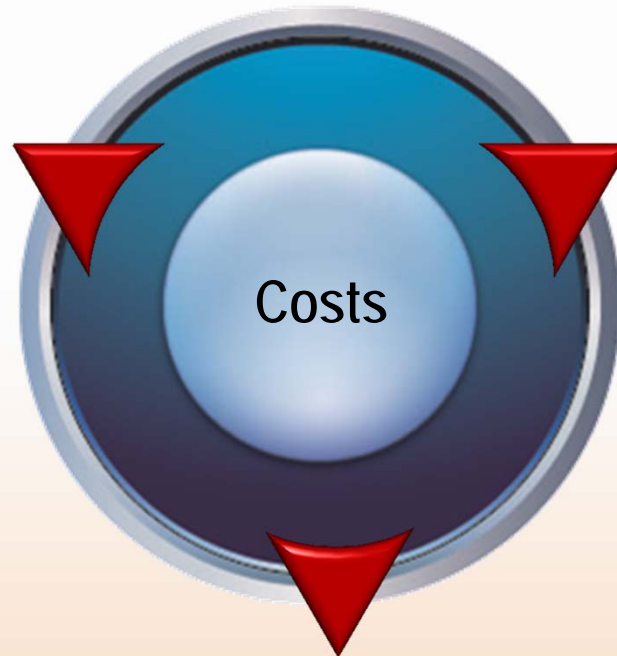
# Proposition 30 Revenue Gain and Loss



Source: 2014-15 May Revision and School Services of California, Inc.

## Districts Face Increasing Cost Pressures

Normal increases to  
salaries and benefits



Normal increases to  
operating costs  
(utilities, supplies,  
services, etc.)

Other extraordinary  
costs (post-  
retirement benefits)

## Employer Pension Increased Costs

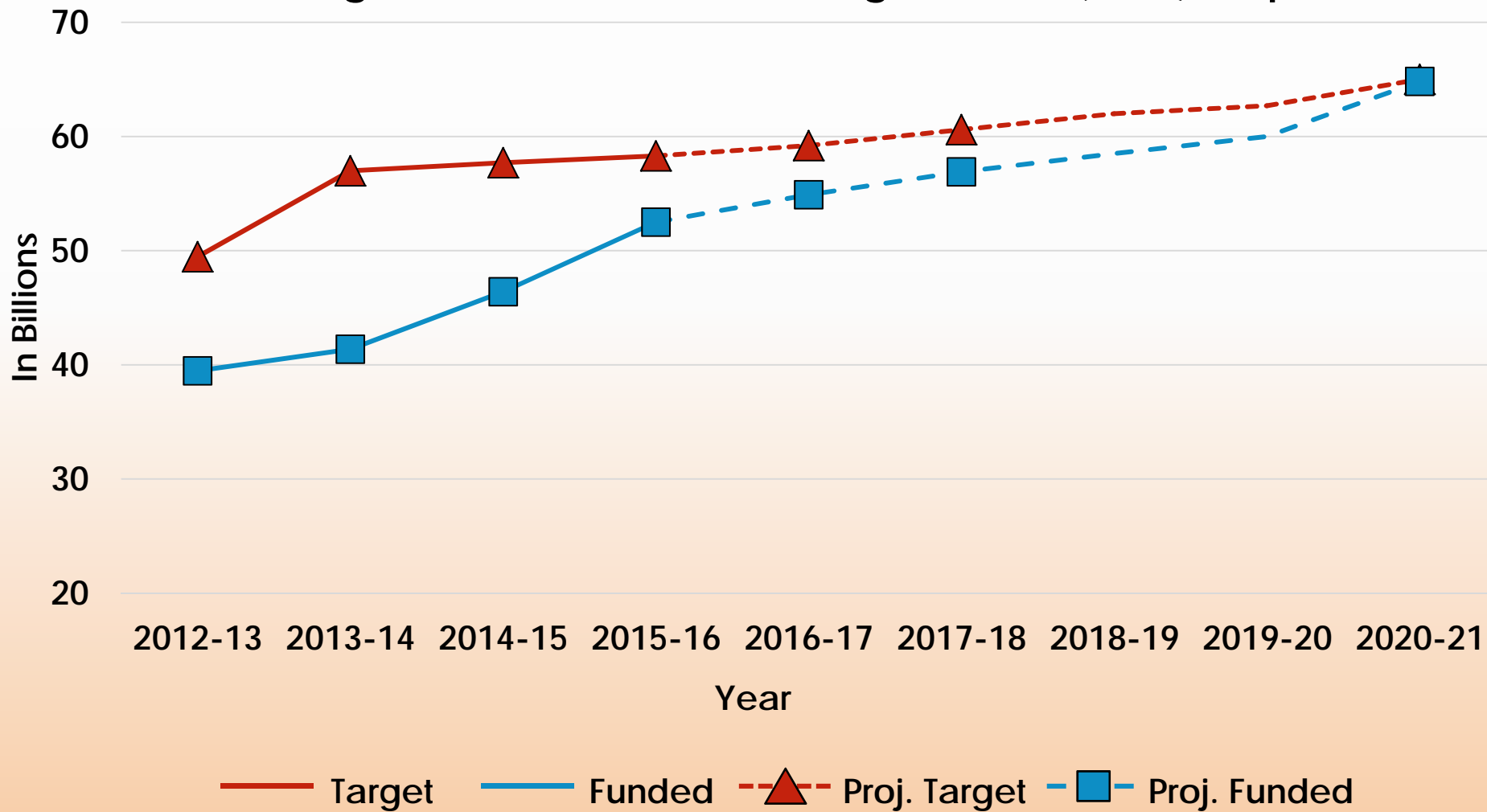
Fiscal Year	CalSTRS* Employer Rate	CalPERS** Employer Rate
2013-14	8.25%	11.44%
2014-15	8.88%	11.77%
2015-16	10.73%	11.85%
2016-17	12.58%	13.05%
2017-18	14.43%	16.60%
2018-19	16.28%	18.20%
2019-20	18.13%	19.90%
2020-21	19.10%	20.40%

\*California State Teachers' Retirement System (CalSTRS)

\*\*California Public Employees' Retirement System (CalPERS)

# Will the State Meet Its Goal?

## Closing the Local Control Funding Formula (LCFF) Gap



The background features a gradient from white at the top to a light beige at the bottom. It is decorated with abstract, flowing, wavy bands of color. A prominent band of bright yellow and orange flows from the top right towards the center. Another band of deep red and orange flows from the bottom left towards the center. The waves have a soft, ethereal quality, suggesting movement and energy.

**THANK YOU**